

May 14, 2010

Following is a history log of Logistics Chief briefings. On May 24, 2010, I'll park this in our Risk Management Learning Center library at www.RMLearningCenter.com Credit Union Risk Managers should go through their credit union, league, and Cuna Mutual directors of education for mission summaries and "best practices."

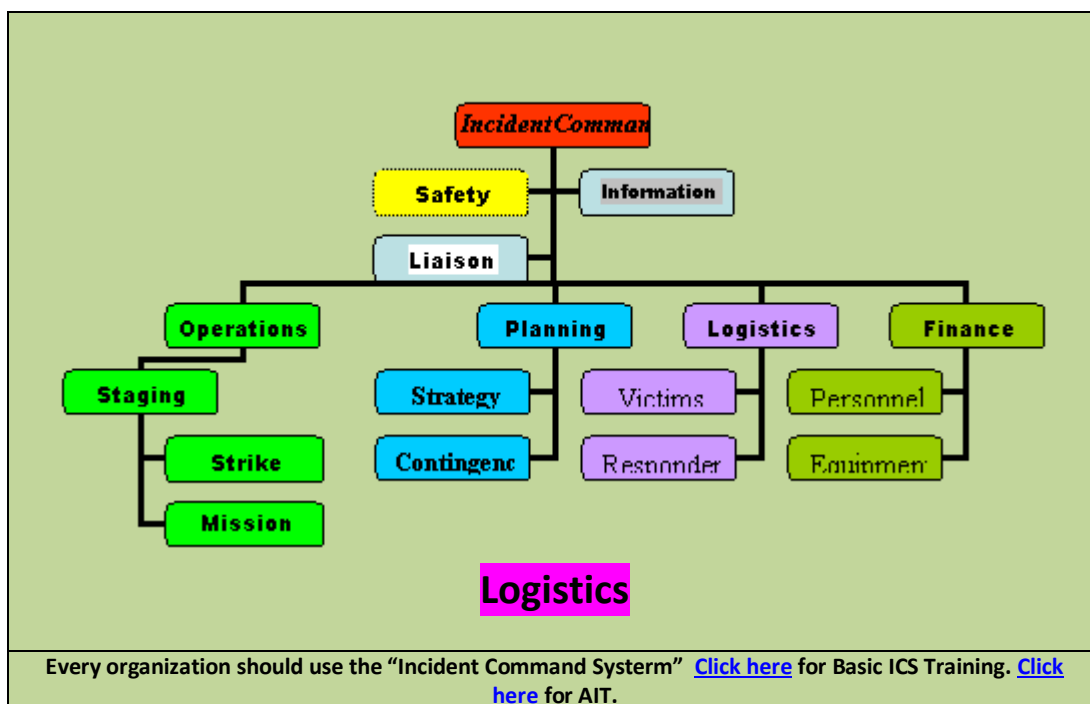
Rich Woldt - CEO The Risk Management Learning Center.

Logistics Chief Briefing: April 21, 2010

Note: Briefings are dated, color coded/bordered and on separate pages so they can be printed for distribution when briefing your troops. Click on pdf file and print.

The Role of the Logistics Chief!

Note: All Briefings begin with a review of Incident Command System. Our goal is to get everyone to speak the same incident management language. When you're the first to the scene, the first thing out of your mouth should be; "I TAKE CONTROL" Your immediate goal is to identify the type, scope, and potential for incident scope creep. Based on your findings you may or may not move from a "single" to a "Unified" command. *Rich Woldt*



FYI: Color Coded: **IC is red**, **Safety Officer is yellow**, **Information Officer and Liaison Officers are light blue**, **Operations Chief is always green**, **Planning Chiefs are dark blue**, **Logistics is purple**, and **Finance Chiefs are in the black**. Wisconsin is a "Home Rule" state. That means your local FIRE CHIEF rules the roost when it comes to life safety issues. The FIRE CHIEF works closely with all event Planning, Operations, Logistics, and Finance Chiefs. [Click here](#) to meet Staging Area #1's Fire Chief and personnel and [click here](#) to contact other departments. (Note: All Fire Departments need volunteers both first and backup responders)

Briefing Saturday May 8, 2010

We have the following:

Fuel depots, pharmacies and motor pools in place!

Motor Pool - Fuel & Medical Supply Depots

During "Rubber hits the Road" managers at all refueling depots will carry the rank of "Full Bull!"



U.S. Hwy 57

**AL Post 527 Tom
Kowalski**



Staging Area # 2

**Ken Gobel - US
Navy**



Staging Area # 3

BP' Diane Hank & Shell' Lisa Anschutz



Motor Pool:

**Viking Grill Owner/CEO
Dan Peterson Commanding**



Medical Supply Depot

**Bay Pharmacies Inc.
President/CEO
Thomas Voegle
Commanding**



Medical Supply Depot

**Pamida Pharmacy
President/CEO
Jim Thomas Commanding**

Briefing May 5, 2010 – Motor Pool & Refueling Depots

In a meeting with our 5 Door County bikers at least one worried they'd not be able to ride from Sturgeon Bay to Northport and back to Green Bay without worrying about fuel. We need to set up a re-fueling plan along the route.

Another wondered about rain and WWII/Korea era vets who might want to join the ride.

Refueling:

Going north on 57 we've commissioned Col. Kowalski to manage refueling at his General Store!

At staging area #2 we commissioned Col. Gobel to manage refueling at his Midstate station across the street from the Pioneer Store.



We commissioned Col. Hank to set up a BP refueling depot station just north of Staging Area #3.

Briefing January 1, 2010 – Basic ICS Training (p1 of 1)

Webster defines "Logistics" as, "The branch of military science concerned with

troop movements and supplies.”

- **Our Logistics Chief is responsible for defining our “Theater of Operation (TOP)” as well as adjusting our perimeter if or when the scope of our operation changes.** For both “Boots on the Ground” and “Rubber hits the Road” our primary Theater of Operation is Door County, however, based on the scope of Rolling Thunders 1244 Memorial Ride Logistics required staging areas to include lodging and meals had to be set up both in La Crosse as well as Green Bay.
- **Logistics Chiefs also determine the appropriate location for Emergency Operations Centers (EOC), Staging Areas, and Outposts.** During “Rubber hits the Road” this included selecting our five staging areas and securing lodging and meals for bikers staying overnight in La Crosse.
- **Logistics Chiefs are also responsible for locating, locking down, and linking victims during a natural or manmade disaster, terrorist attack, Pandemic, or large scale community crisis.** During both Boots on the Ground and Rubber hits the Road, our Logistics Chief was responsible for locating the grave sites for our 5 Door County Veterans Killed in Action during the Vietnam War as well as attempting to find Vietnam Veterans living in Door County or residing somewhere in Wisconsin.

Briefing: March 1, 2010 - Staging Areas and Google Mapping

- Operation “Rubber hits the Road” identified 5 Staging Areas and will prepare traffic flow and vehicle positioning plans based on the number of riders and drivers answering Roll-call. We’re also writing Staging Area Management protocols to include using GPS and Google Mapping technologies for security and safety. We’re developing plans to track both rides from VA Hospitals, retirement centers, and homes of shut-ins via Google earth links. We’ll identify alternative technology to use if primary systems are compromised. Click here for the latest version of our [Ride Map](#).

Briefing April 24, 2010

Door Devils Routing down #42 as oppose to "T"

Page 1 of 4

? [Ride Map](#)

I drove the proposed route from Northport to Staging Area #3 using "T" between Egg Harbor and InSTITUTE. Using that routing and leaving Northport at 7:45 with little or no stopping at staging area #2 we'll be at staging area #3 about 92 minutes later or at 9:17 a.m. Based on driving the route from Staging Area #2 to LZ Lambeau we'll be at the Lombardi exit at 10:15 a.m.

We're not locked in on taking "T" so I went back to Randy's grave site and took Hwy 42 past Randy's brothers house and took a left on Whitefish Bay Road to Hwy 57 and then into InSTITUTE. Driving the speed limit it took 20 minutes which is almost the same as taking "T".

The benefit is we'd go past Ralus Wagner's at 5425 Hwy 42 as well as past Rodney' Wagner's at 6755 Hwy 42. All things being considered, I think we should plan to ride #42 to Whitefish Bay Road then over to #57 and into institute. The turn on to #57 using Brauer Road I think should be an easy entrance.

FYI: I met with the Sister of Phil Overbeck who's married to Leo Zipper and who lives next to the Bayside Cemetery. Let's consider a short pause at Bayside Cemetery maybe at the end of her driveway. By short I mean a stop and start with a 15 second pause. Based on our current time line maybe we could build in a 30 second pause at each cemetery. The sheriff could stop and hold his position while our 5 KIA bikers could ride up to the gravesite pause for a second and then circle back out of the cemetery. It would work in Egg Harbor for Randy (you'd go in the entrance with his site on your left and circle right and out the south cemetery exit, falling back in line behind the Sheriff. At Dave Schaefer's site you'd ride in with David's site to your right, circle left and back out through the parking lot. The Sheriff could hold the line on #57 until you came through the parking lot and then move ahead on to "P" so you could fall in behind before heading West. At Bayside, considering both Phil and Dan's sites can be seen from Bay Shore Drive you could either do the circle or I think best, pause and hold for a full minute before heading into Sturgeon Bay. We might consider a rifle salute during the one minute hold. I'll bring it up with our Chief of Planning.

It's your call! It also your call if you'd like to hold the planned 6 a.m. graveside service at a later time in Sturgeon Bay and InSTITUTE and then have the riders meet up with the ride

along the way such as at the Egg Harbor. That might help solve fuel problems and having to get going so early. It's totally up to you! We do want at least the Perez bike at Northport. I'm not sure but I think Carl T. and a buddy of his will also be at Northport. Tim, call me when you read this and I'll follow your advice. Rich

Following are my time charts for your records. I think I got them right:

Destination	Miles	Time	Time Lapse	Target	Miles	Time Lapse
Northport Pier	0	4 p.m.	0	7:45 a.m.		
Gills Rock Stop Sign	2.2	4:05	5			
Old School Road	6.7	4:09	9			
Staging Area #2 Viking Grill	7.2	4:12	12	8:00 a.m.		
Shepherd of the Bay Church	8	4:14	14			
JJ's	11.2	4:18	18			
Sister Bay Bowl	12.7	4:22	22			
Bay Lake Bank	13.0	4:23	23			
Little Sister Cemetery	16.0	4:25	25			
Wilson's	16.5	4:29	29			
Peninsula Park	18	4:32	32			
Gibraltar High School	20.4	4:35	35	8:20		

Bottom Fish Creek Hill	21.4	4:37	37			
Bob Lautenbach	22	4:38	38			
Peninsula Players	24.2	4:40	40			
Judville	24.5	4:41	41			
Lull-Abi	27.3	4:44	44			
Randy Wagner EH Cemetery	28 Miles	4:45	45	8:30 a.m. Randy Gravesite	0	0
Hwy #42 & Ct. T	28.2	4:46	46			
Red School House	33	4:52	52	Carlesville	7.3	8
W. Jacksonport Bley's Bar	33.2	4:53	53	Brother's house	8.6	10
Ct "T" and Ct "I"	36.4	4:57	57	Whitefish Bay Rd	10.4	12
Note: Rough Road						
Ct "T" and Hwy 57	38.1	4:59	59	Massey Rd	11.6	13
#57 and "WD"	38.6	5 p.m.	1 hour	Country View	12.6	15
Valmey	39.5	5:01	:01	Hwy 57 Brauer Rd	13.5	16
David Schaefer Institute Bar Hwy 57 and Ct "P"	41.4	5:04	:04	8:50 a.m. Institute Bar	14.8	20 Minutes

Ct "P" and Hwy 42	43.9	5:08	:08	
Dunn and Martine Cherry Road	45.9	5:12	:12	
Ct Dunn and Bay Shore Drive "B"	46.5	5:13	:13	
Overbeck/Phister Bay Shore Cemetery		5:17	:17	9:15
Veterans Memorial	50.6	5:23	:23	9:20
Sturgeon Bay High School	51.3	5:24	:24	9:22
Michigan Street and Hwy 42	52 Miles	5:26	:26	
42/57 Bridge	53.2	5:28	:28	
Woldt's Corners	55.4	5:30	:30	
Staging Area #3 Pioneer CU Branch	56.2	5:32 p.m.	1 hour 32 Minutes	10:00 a.m.

? Ride Map

Staging Area	Website	GPS - Google Map
Washington Island High School and Cemetery at School House Beach.	Door County Schools	Washington island high school Google Search Google Map
Viking Grill – Ellison Bay	www.sbfd.com Area Fire Departments	Viking Google Map
Pioneer Credit Union Branch parking lot – 1449 Green Bay Road, Sturgeon Bay 54235	www.Pioneercu.org	Pioneer CU Google Map
Pioneer Credit Union parking lot 828 Morris Ave. Green Bay	www.Pioneercu.org	Street View – Google Map
Super 8 – 1625 Rose Street La Crosse	Super 8 La Crosse	Google Map

Staging area protocols specific to “Rubber hits the Road”

Staging Area #2

<ul style="list-style-type: none"> All bikes will back in starting in front of the Pioneer Store on the north side of my black Monti Carlo in the picture. Note the Sheriff’s squad might be parked at this point prior to deploying to Northport. 	
•	•
•	•
•	•
•	•
•	•

From Operations Chiefs: The following is a text messages sent to the Logistics Chief from Operation Chief:

Operation “Rubber hits the Road” is similar to a parade or an auto race. We need to line up bikes, cars, trucks, emergency vehicles, etc. like a parade with bikers in and out first and positioned on the perimeter so they are not blocked in. We need to safely pick up riders from

two to four staging areas (Viking Grill – Ellison Bay and Pioneer CU 1449 Green Bay Road, and possibly from the Egg Harbor and Saint Peter & Paul’s cemetery in Institute). For now, we’ll adopt the following principles:

- Entry into staging areas will be through the north entrance and exit out the south exit.
- The lead biker will proceed to and park near the south exit facing out of the lot. Cars, trucks, busses, etc. will park toward the back of the lot to allow bikers waiting in the lot to form behind those already in the ride.

From Planning Chief: Following is email received from Planning Chief about locating gravesites:

Learn to use the cemetery index created by the Peninsula Genealogical Society. There is a printed version of this index in the Laurie History Room of the Sturgeon Bay library

<http://www.rootsweb.ancestry.com/~wipgs/PGS/cemeteriesindexes.htm>

If you wish to search on a specific name, you can use their search box on the homepage

<http://www.rootsweb.ancestry.com/~wipgs/PGS/index.htm>

About Short-timer’s calendar: *In Vietnam most vets carried a short-timers calendar to count down the days they had left in-country. Mine was printed around my helmet, others wrote them on their arm or carried it in their back-packs.*

The Short-times calendar for “Boots-on-the-Ground” and “Rubber-hits-the-Road” started 72 days out from Opening ceremonies for LZ Lambeau. I picked 72 days to remind our CU Risk Managers of their 72 hour stand-alone duty during the next terrorist attack, natural disaster or pandemic.

Logistics Briefing:

- The location of 5 Staging Areas
- The location of 5 KIA Gravesites
- Locating KIAs on the moving WALL
- Leaving personal messages that will be included in personal Wall archives.
- Using Google Mapping to Locate Grave Sites

Staging Areas & EOCs		
Staging Areas	Website	GPS - Google Map
#1 Washington Island High School and Washington Island Cemetery at School House Beach	Door County Schools Google Map	Washington island high school Google Search

#2 Viking Grill – 12029 Hwy 42 Ellison Bay, Wisconsin	www.sbfd.com Area Fire Departments	Viking Google Map
#3 Pioneer Credit Union Branch parking lot – 1449 Green Bay Road, Sturgeon Bay 54235	www.Pioneercu.org	Pioneer CU Google Map
#4 Pioneer Credit Union 828 Morris Ave. Green Bay	www.Pioneercu.org	Street View – Google Map
#5 Super 8 – 1625 Rose St. La Crosse	Super 8 La Crosse	Google Map

•

Staging Areas – KIA Gravesites

Name Rank/Site/Panel

Home Page

GPS - Google Map

#1 [Google Map](#)



Dan L. Pfister

Sfc. U. S. Army - Medic

Sturgeon Bay,

KIA June 18, 1968

[Panel 56W line 26](#)

RIP Bayside Cemetery



Black car parked next to gravesite!



#1 Google Map Go as close in as you can and then drag the little man to the site. Once there you should get a ground view you can use to pan 360 degrees.



Note: Click on Panel 56W line 26 to visit the WALL in Washington D.C.

There you'll be able to read messages left by others and leave a personal message of your own. [Click here](#) for a recommend Wall

#2 [Google Map](#)



Randy W. Wagner

Corporal U.S. Army

Egg Harbor,

KIA 11/27/1968

[Panel 38W line 80](#)

RIP Egg Harbor Cemetery



Picture taken standing on Hwy 42 north of north entrance to the cemetery. Note flag pole and read votive candle.



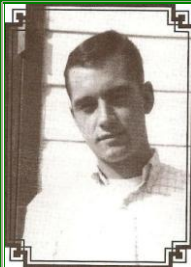
#1 Google Map Go as close in as you can and then drag the little man to the site. Once there you should get a ground view you can use to pan 360 degrees.



Note: Click on Panel 38W line 80 to visit the WALL in Washington D.C.

There you'll be able to read messages left by others and leave a personal message of your own. [Click here](#) for a recommend Wall

#3 [Google Map](#)



David R. Schaefer

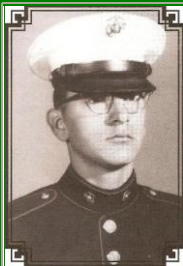
Sergeant U.S. Army

Sturgeon Bay

KIA May 1, 1969

[Panel 26W line 94](#)

RIP St P&P Institute



Richard E. Perez

Lance Corporal USMC

Washington Island

KIA September 6, 1969

[Panel 18W line 49](#)

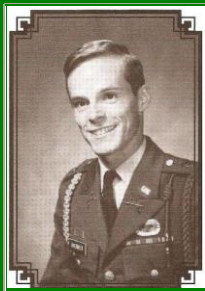
RIP Island Cemetery



From AL 402 Commander Richard Purinton:

The island cemetery is near School House Beach, just off Jackson Harbor Road (Washington Harbor), about 1/4 mile from Bethel Church. The grave is in the east side (newest section) and next to the southernmost of the three graveled drives, about 300 ft. in from the blacktopped drive. #4 [Google Map](#)

#5 [Google Map](#)



Philip M. Overbeck

1st Lieutenant US Army

Sturgeon Bay

KIA June 10, 1970

[Panel 09W line 40](#)

RIP Bayside Cemetery



Picture taken standing on Bay Shore Drive looking between trees into Ward #1. Look behind white cross on near-by grave.

[Google Map](#)



#5 Google Map Go as close in as you can and then drag the little man to the site. Once there you should get a ground view you can use to pan 360 degrees.

